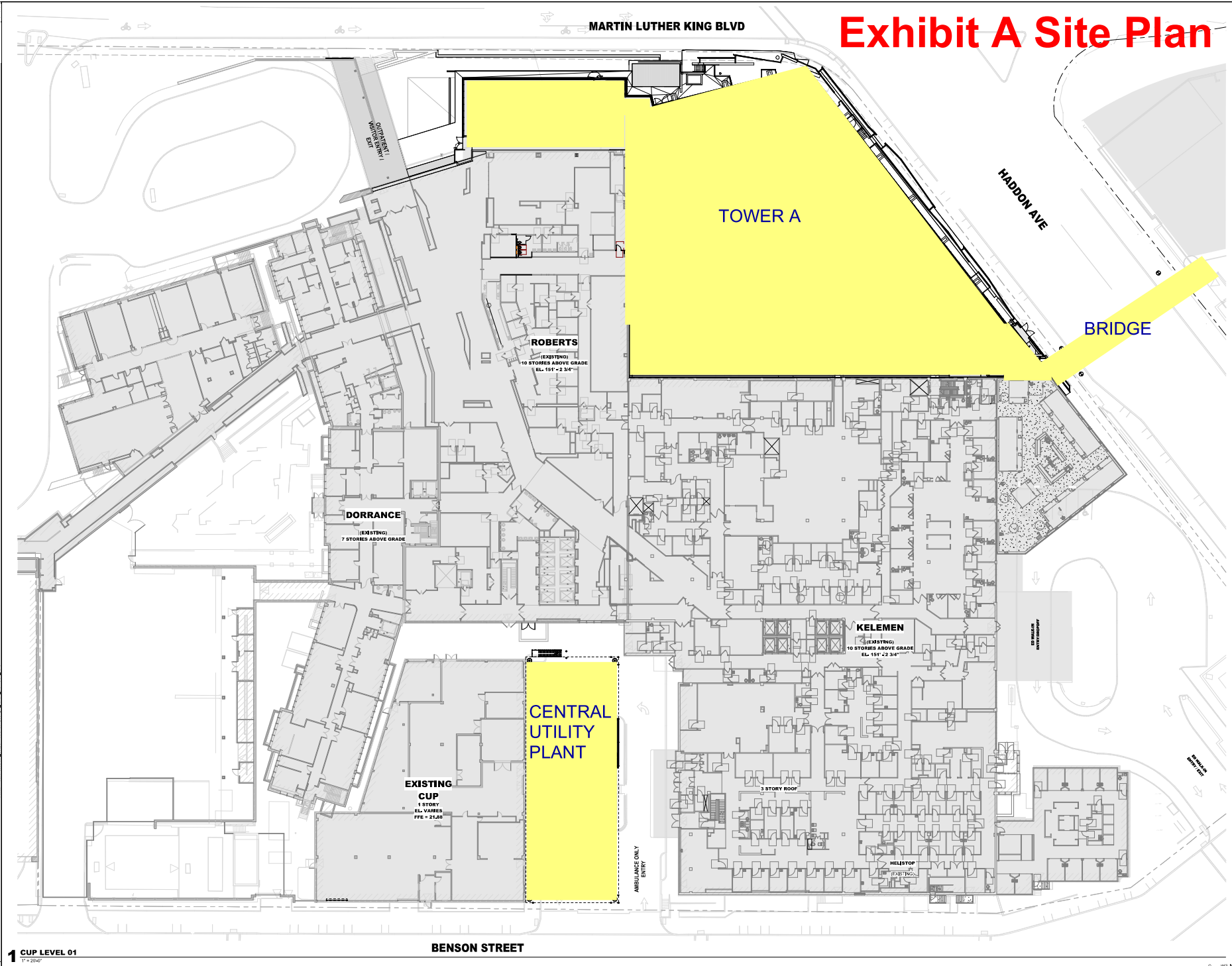


Exhibit A Site Plan



INTERIM REVIEW ONLY
 These documents are prepared, and any design or construction shall be done on the basis of the information provided herein. The user of these documents shall be responsible for obtaining all necessary permits and approvals from the appropriate authorities.

ARCHITECT: HKS INC.
 1201 HENRY STREET, SUITE 600
 WASHINGTON, DC 20002

STRUCTURAL ENGINEER: COONNELL & WILCOX LTD
 710 MARSHFIELD DRIVE
 PHILADELPHIA, PA 19106

MEP/FP / LOW VOLTAGE ENGINEER: BRUNNENBERG ENGINEERS
 3810 WALNUT ST, SUITE 101
 PHILADELPHIA, PA 19102

HIGHLAND ASSOCIATES
 102 HIGHLAND AVE
 CLARKSBURG, PA 15811

HKS

ARCHITECT
 HKS INC.
 1201 HENRY STREET, SUITE 600
 WASHINGTON, DC 20002

STRUCTURAL ENGINEER
 COONNELL & WILCOX LTD
 710 MARSHFIELD DRIVE
 PHILADELPHIA, PA 19106

MEP/FP / LOW VOLTAGE ENGINEER
 BRUNNENBERG ENGINEERS
 3810 WALNUT ST, SUITE 101
 PHILADELPHIA, PA 19102

HIGHLAND ASSOCIATES
 102 HIGHLAND AVE
 CLARKSBURG, PA 15811

Cooper University Health Care
COOPER UNIVERSITY
HOSPITAL - CUP EXT

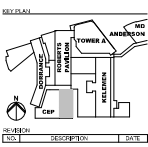
PROJECT ADDRESS: COOPER UNIVERSITY CAMPUS

OWNER: COOPER UNIVERSITY HEALTHCARE
 1 COOPER PLACE
 CAMDEN, NJ 08102

PROJECT MANAGER: HANSEN
 2710 S CLANDY STREET, SUITE 400
 ARLINGTON, VA 22206

CR/ENGINEER: LANGRAN
 1716 MARSHFIELD DRIVE, SUITE 1000
 PHILADELPHIA, PA 19102

SEAL & SIGNATURE



HKS PROJECT NUMBER: 25695.104
 DATE: 10/31/2024
 ISSUE: SCHEMATIC DESIGN

SHEET TITLE: ARCHITECTURAL STREET LEVEL

SHEET NO. UA1.02

1 CUP LEVEL 01
 11/2024

BENSON STREET

MARTIN LUTHER KING BLVD

HADDON AVE

BRIDGE

TOWER A

ROBERTS
 (EXISTING)
 10 STORIES ABOVE GRADE
 EL: 151' - 2.34'

DORRANCE
 (EXISTING)
 7 STORIES ABOVE GRADE

KELEMEN
 (EXISTING)
 10 STORIES ABOVE GRADE
 EL: 151' - 2.34'

CENTRAL UTILITY PLANT

EXISTING CUP
 1 STORY
 EL: VARIOUS
 FFE = 21.00

AMBULANCE ONLY ENTRY

OUTDOOR WALKWAY

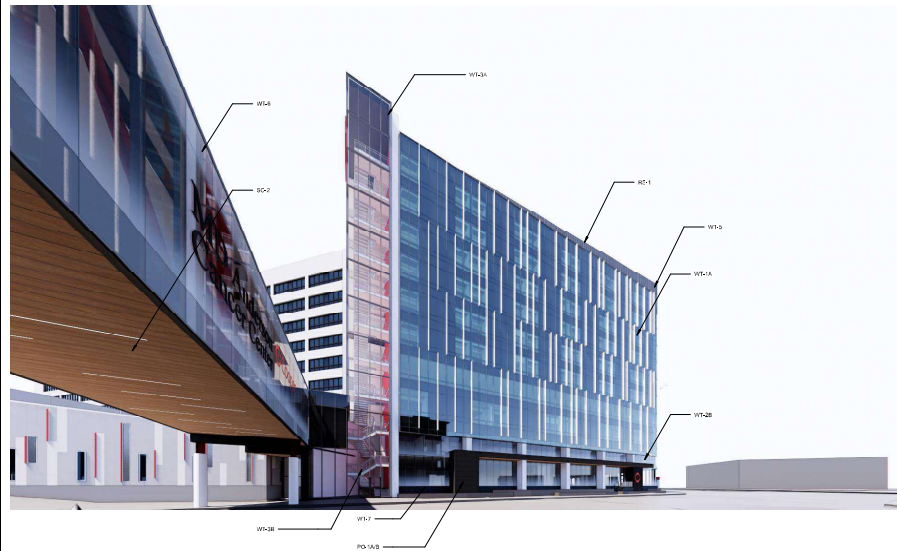
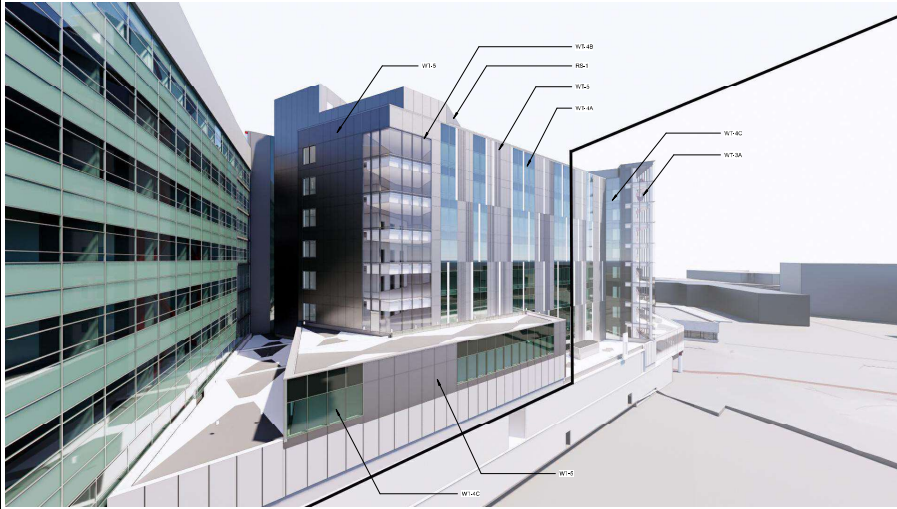
HELISTOP
 (EXISTING)

3 STORY ROOF

1111
 11/2024

WALL TYPE SCHEDULE			
WT-1A	SSG UNFINED CURTAIN WALL WITH SHADING FINIS SOUTH TOWER AMP-01, GL-IV, GL-V	WT-3A	SSG UNFINED CURTAIN WALL WITH SHADING FINIS SOUTH TOWER AMP-01, GL-IV, GL-V
WT-1B	SSG UNFINED CURTAIN WALL WITH SHADING FINIS AND EXTENSION AT ROOF SOUTH TOWER AMP-01, GL-IV, GL-V	WT-3B	SSG FINISHED CURTAIN WALL WITH SHADING FINIS SOUTH TOWER AMP-01, GL-IV, GL-V
WT-1C	SSG UNFINED CURTAIN WALL WITH GLAZED-IN METAL PANEL SOUTH TOWER AMP-01	WT-4A	SSG UNFINED CURTAIN WALL WITH GLAZED-IN METAL PANEL ACCENTS WEST AND SOUTH TOWER AMP-01, AMP-02, GL-IV, GL-V, GL-IVP
WT-2A	SSG UNFINED CURTAIN WALL NORTH AND EAST TOWER AMP-01, GL-IV, GL-V, GL-VS	WT-4B	SSG UNFINED CURTAIN WALL SOUTH TOWER AMP-01, GL-IV, GL-V
WT-2B	SSG UNFINED CURTAIN WALL NORTH AND EAST TOWER AMP-01, GL-IV, GL-V, GL-VS	WT-4C	SSG UNFINED CURTAIN WALL SOUTH TOWER AMP-01, GL-IV, GL-V
WT-5	METAL PANEL SCREENS ON STRUCTURAL BACKUP WALL WEST AND SOUTH TOWER AMP-01, AMP-02	WT-6	SSG UNFINED CURTAIN WALL SOUTH TOWER AMP-01, GL-IV, GL-V
PO-1B	DIMMED AND BACK VENTED METAL PANEL ON STEEL STRUCTURE NORTH AND EAST TOWER AMP-01	PO-1C	HEAVY-PRESSURE FABRIC TENSILE SCREEN OVER STEEL STRUCTURE NORTH AND EAST TOWER AMP-01
WT-7	DRUM MOUNTED METAL FABRICATION OVER GENERAL WOOD NORTH AND EAST TOWER AMP-01	WT-8	METAL PANEL SCREENS ON CONTINUOUS INSULATION ON CONCRETE FORMED METAL PANEL BACKUP WALL ROOF LEVEL, AMP-01
PO-1A	NATURAL STONE WITH KEYP ANCHOR ON STEEL STRUCTURE SOUTH TOWER AMP-01		

Exhibit A Tower A Perspectives



03 SOUTHEAST PERSPECTIVE
NTS

02 NORTHWEST PERSPECTIVE
NTS

01 NORTHEAST PERSPECTIVE
NTS

RESERVE FOR COCA STAMP

HKS
ARRAY
architects

ARCHITECT
HKS, P.C.
2025 B STREET NW, SUITE 400
WASHINGTON, DC 20005

ASSOCIATE ARCHITECT /
INTERIOR DESIGNER
ARRAY
1700 B STREET NW, SUITE 500
CROSS CROCKERS, VA 24038

STRUCTURAL ENGINEER
TODD WILSON & ASSOCIATES
701 MARKET ST. #600
PHILADELPHIA, PA 19106

MECHANICAL / LOW VOLTAGE
ENGINEER
BR-A CONSULTING ENGINEERS
300 MARKET ST. SUITE 100
PHILADELPHIA, PA 19103

MECHANICAL ASSOCIATES
100 HIGHLAND AVE.
CLARKS SUMMIT, PA 18811

Cooper
University Health Care
**COOPER UNIVERSITY
HOSPITAL - TOWER A**
PROJECT ADDRESS: COOPER UNIV. CAMPUS, LANCASTER, PA

OWNER
COOPER UNIVERSITY HEALTH-CARE
1 COOPER PLACE
CAMDEN, NJ 08102

PROJECT MANAGER
MANNES
2700 S. GLENY STREET, SUITE 400
ARLINGTON, VA 22206

CIVIL ENGINEER / LANDSCAPE
LANGRISH
1700 MARKET STREET, SUITE 1300
PHILADELPHIA, PA 19103

SEAL & SIGNATURE

Digitally
Signed by
L. Hanson
Date:
2024.10.15
14:11:29-04'00"

REVISION

NO. DESCRIPTION DATE

HKS PROJECT NUMBER
25695.100

DATE
08/15/2024

ISSUE
CORE & SHELL PERMIT

SET

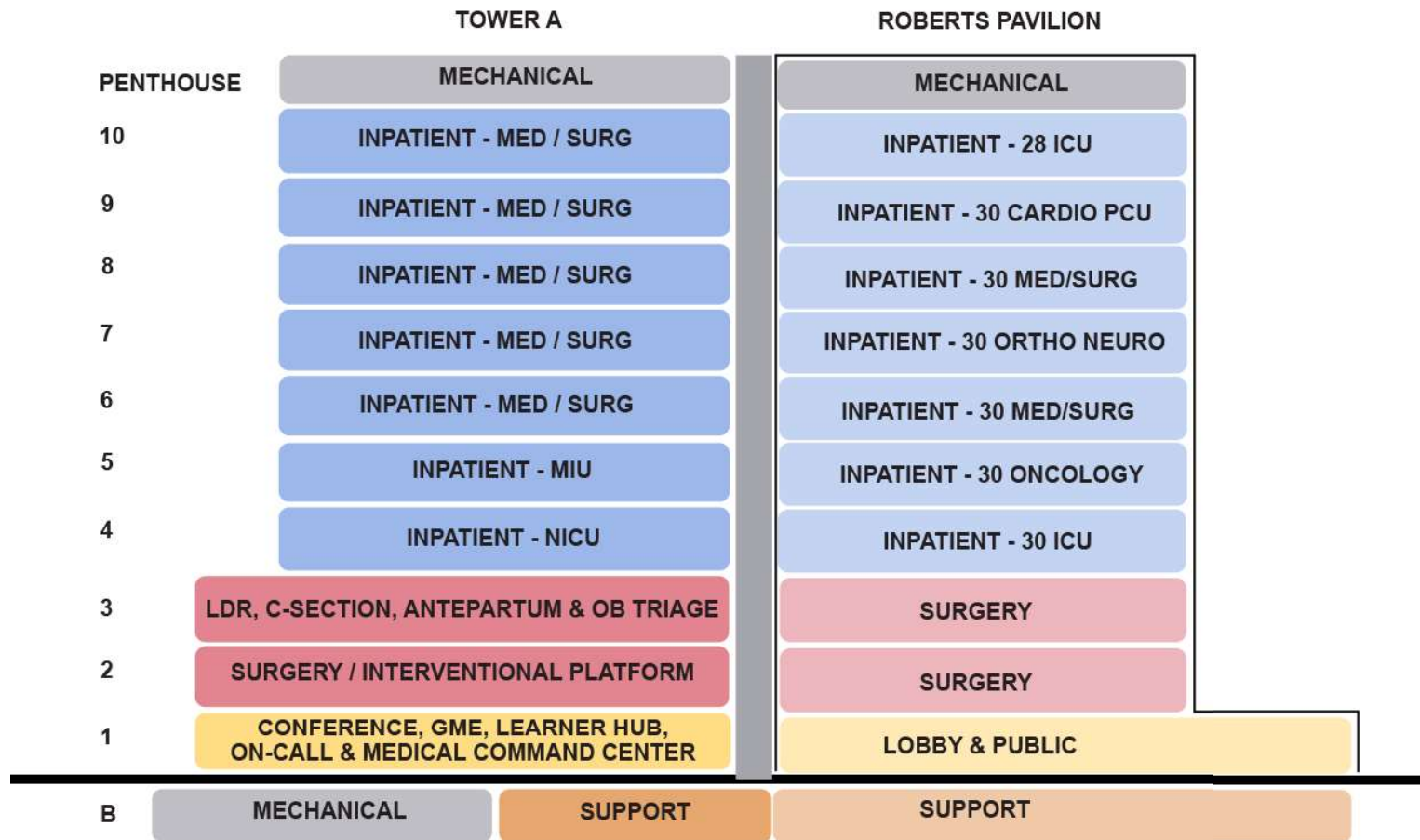
TITLE
ARCHITECTURAL

RENDERINGS

SHEET NO.
A5.00

SHEET NUMBER: 1111

Exhibit A Tower A Stacking Plan



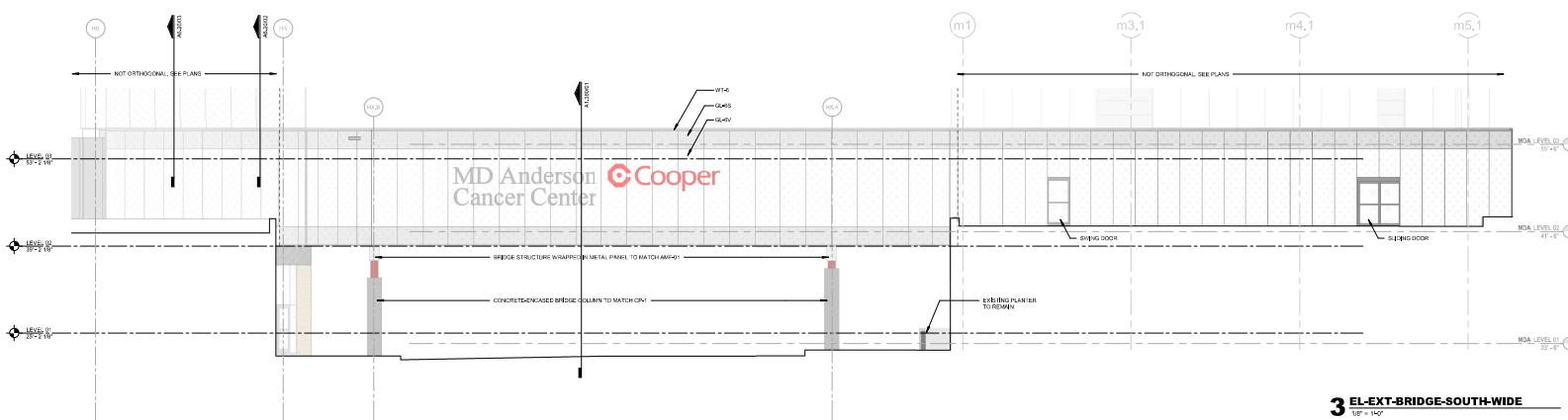
FACADE MATERIAL LEGEND

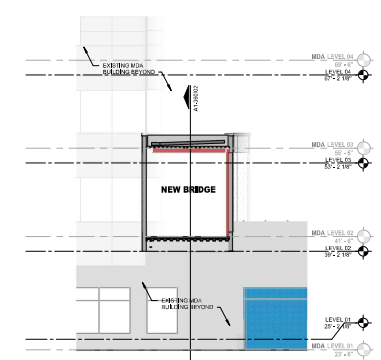
GENERAL NOTES

1. REFER TO ARCHITECTURAL SYSTEMS DRAWINGS FOR DETAILED EXTERIOR FINISH SECTIONS.
2. SEE NOTES ON ELEVATIONS FOR LOUVER LOCATIONS.
3. SEE NOTES ON ELEVATIONS AND DETAILS FOR WINDOW COATING AND CASING TYPICAL COATING AND FINISHES TO MATCH COOPER HOSPITAL, JPHC.
4. PROVIDE BRIDGE SUPPORT THROUGH CLADDING WALL TRAILING.

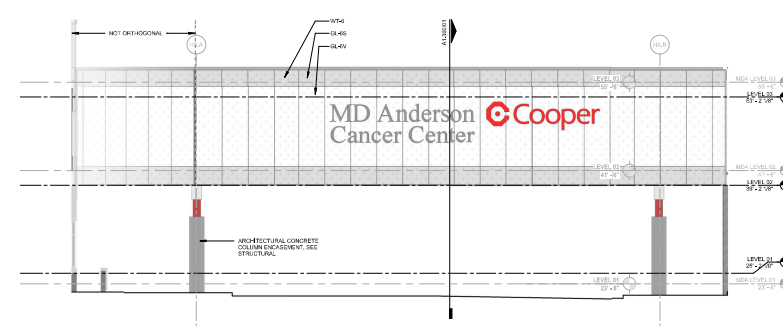
Exhibit A Bridge Elevations



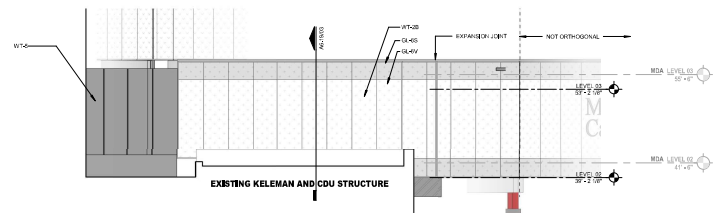
3 EL-EXT-BRIDGE-SOUTH-WIDE
1/8" = 1/4"



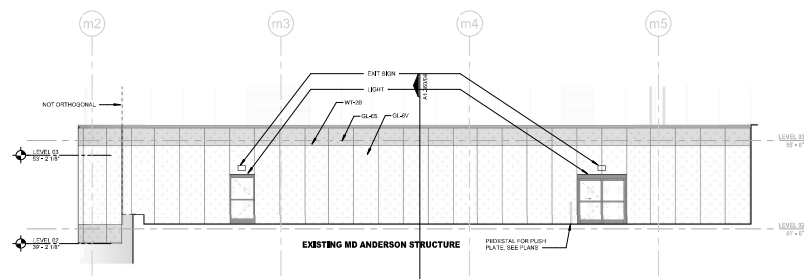
05 ELEVATION - BRIDGE AT WEST MD ANDERSON
1/8" = 1/4"



2 EL-EXT-BRIDGE-NORTH-WIDE
1/8" = 1/4"



04 ELEVATION - BRIDGE - SOUTH WEST
1/8" = 1/4"



1 EL-EXT-BRIDGE-NORTH-MDA
1/8" = 1/4"

HKS
ARRAY
ARCHITECT
1001 RIVERSIDE STREET, SUITE 400
WASH DC, DC 20005
ASSOCIATE ARCHITECT / INTERIOR DESIGNER
ARRAY
1001 RIVERSIDE STREET, SUITE 500
CONSHOHOCKEN, PA 19383
STRUCTURAL ENGINEER
TOSCHINI & ASSOCIATES
701 MARKET ST. #600
PHILADELPHIA, PA 19106
MEP/FP/LV LOW VOLTAGE ENGINEER
BR-A CONSULTING ENGINEERS
5801 MARKET STREET, 5TH FLOOR
PHILADELPHIA, PA 19103
MECHANICAL ASSOCIATES
100 HIGHLAND AVE
CLARKS SUMMIT, PA 18811

Cooper University Health Care
COOPER UNIVERSITY HOSPITAL - TOWER A
PROJECT ADDRESS: COOPER UNIVERSITY HEALTH CARE

OWNER
COOPER UNIVERSITY HEALTH-CARE
1 COOPER PLACE
CAMDEN, NJ 08102
PROJECT MANAGER
HARRIS
270 S GLENVIEW STREET, SUITE 540
ARLINGTON, VA 22206
Civil Engineer / Landscape
LANGRAN
1700 MARKET STREET, SUITE 1300
PHILADELPHIA, PA 19103
SEAL & SIGNATURE

Digitally signed by L. Hanson
Date: 2024.10.15 14:14:43-04'00'

REVISION

NO.	DESCRIPTION	DATE

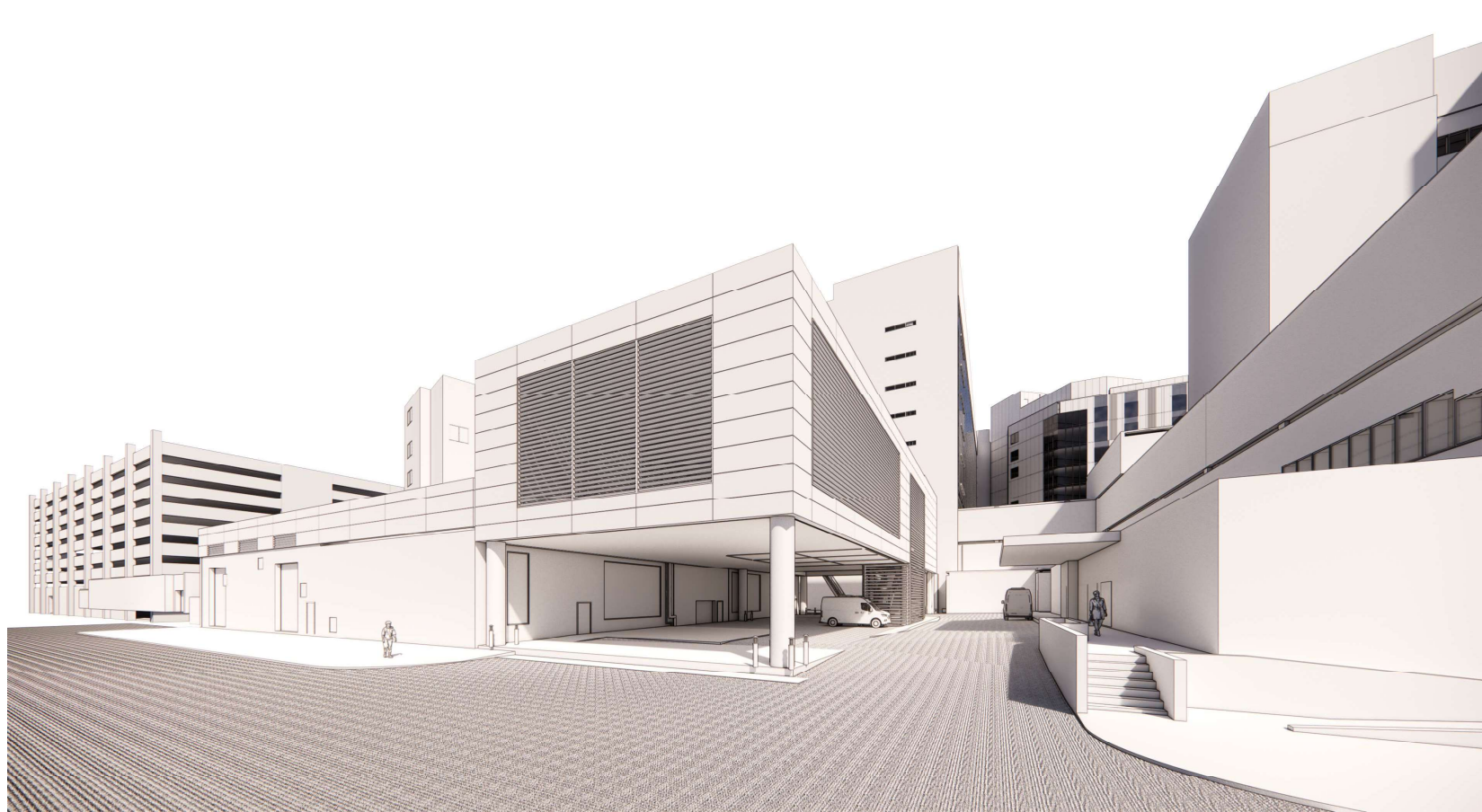
HKS PROJECT NUMBER:
25695.100
DATE:
10/15/2024
ISSUE
CORE & SHELL PERMIT SET
PROJECT TITLE:
BRIDGE ELEVATIONS

SHEET NO.
A1.350

Exhibit A Central Utility Plant Perspective

HKS

COOPER UNIVERSITY HOSPITAL (CUH) - CENTRAL UTILITY PLANT (CUP) CAMDEN, NJ



COOPER UNIVERSITY HOSPITAL

OWNER PROJECT
1 COOPER PLAZA
CAMDEN, NJ 08103

PROGRAM MANAGER

HAMITS
2708 G QUINCY STREET, SUITE 540
ARLINGTON, VA 22206

ARCHITECT

HKS INC.
1500 EYE ST NW SUITE 600
WASHINGTON, DC 20005

STRUCTURAL ENGINEER

ODONNELL AND ACCIARATO
700 MARKET ST 8000
PHILADELPHIA, PA 19106

MEP/FP ENGINEER

BRVA CONSULTING ENGINEERS
2401 WALNUT ST, SUITE 700
PHILADELPHIA, PA 19102

GENERAL ASSOCIATES

152 HIGHLAND AVE
CLARKS SUMMIT, PA 19411

CODE CONSULTANTS

JENSEN HUGHES
111 ROCKVILLE PIKE, SUITE W 500
ROCKVILLE, MD 20850

ACOUSTICAL CONSULTANTS

GENSLER ASSOCIATES
100 AVENUE OF THE AMERICANS, 4TH FL.
NEW YORK, NY 10018

WIND STUDY CONSULTANTS

NBP USA
ONE PENN PLAZA, 250 W 54TH ST, 5TH FLR
NEW YORK, NY 10019

SCHEMATIC DESIGN

